



FONDAZIONE GUIDO BERNARDINI
BETTER EDUCATION FOR BETTER SCIENCE



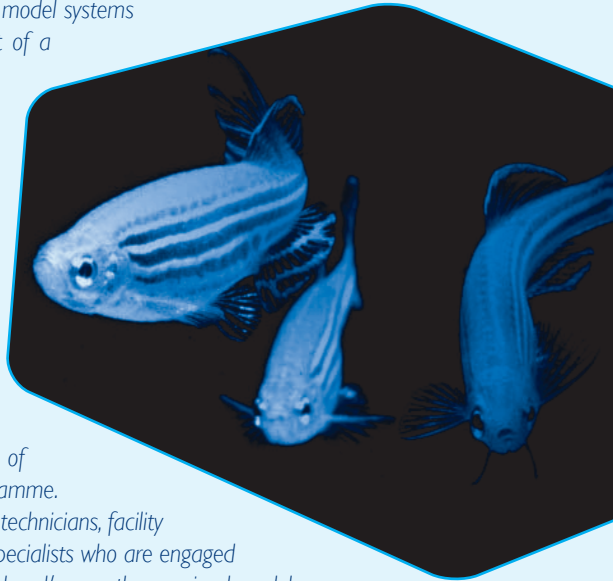
INTERNATIONAL WORKSHOP

iat CPD IAT CPD credits: 10 points

Zebrafish: an animal model in biomedical research

Zebrafish is one of the most popular vertebrate model systems in today's research. This workshop is the result of a collaboration between University College London, King's College London, FGB and COSTaction BM0804, the European Network on Fish Biomedical Models (EuFishBioMed).

It will take place at University College London and King's College London (UK) harboring one of the largest European Zebrafish research facilities. Lectures will provide the latest information on the organisation of a modern Zebrafish facility, animal husbandry and care, health monitoring, GMO technology, international legislation and guidelines and applied research technologies. Demonstrations of frequently used techniques are part of the programme. This workshop is addressed to researchers, senior technicians, facility managers, veterinarians and laboratory animal specialists who are engaged in the care and use of Zebrafish or plan to breed and/or use these animal models.



23RD to 24TH May 2013
King's College London - UK

FIRST ANNOUNCEMENT

Thursday 23RD of May

Registration	09:00
Welcoming address	10:00 - 10:15
<i>King's College, UCL, FGB, COST</i>	
Use of Zebrafish in biomedical research: possibilities and challenges	10:15 - 10:45
<i>Stefan Schulte-Merker</i>	
Progress of the European Stock Centre	10:45 - 11:15
<i>Robert Geisler</i>	
Coffee / Tea	11:15 - 11:45
Legislation: the EU directive and its transposition result specific aim at fish research	11:45 - 12:15
<i>Jan-Bas Prins</i>	
Recommendations and guidelines - report from the COST action and FELASA-COST WG	12:15 - 13:00
<i>Peter Aleström</i>	
Lunch	13:00 - 14:00
How to run a facility?	14:00 - 14:30
<i>Carole Wilson</i>	
Large scale stock management: the Zebrafish mutation project	14:30 - 15:00
<i>Elisabeth Busch</i>	
Coffee / Tea	15:00 - 15:30
Demos: fin clipping, sperm freezing and IVF, embryo injection	15:30

Friday 24TH of May

History of Zebrafish husbandry	09:00 - 09:30
<i>Greg Paull</i>	
Diseases and health issues	09:30 - 10:00
<i>Jean Philippe Mocho</i>	
Ethical issues	10:00 - 10:30
<i>Lynn Snedden</i>	
Coffee / Tea	10:30 - 11:00
Presentation of cases and discussion of things that have arisen	11:00 - 12:00
<i>Participants are asked to submit their (facilities) experiences and problems beforehand</i>	
Wrap-up of COST action and future plans	12:00 - 12:30
<i>Chair of COST action</i>	
Light lunch	12:30 - 13:15
Visit of King's College and UCL fish facilities	13:15 - 15:00

Scientific Committee

Corinne Houart - MRC Centre for Developmental Neurobiology, King's College, London, UK

Carole Wilson - UCL Zebrafish facility, London, UK

Jan-Bas Prins - Fondazione Guido Bernardini

Faculty

Peter Aleström - Norwegian School of Veterinary Science, Oslo, Norway

Elisabeth Busch - Wellcome Trust Sanger Institute, Cambridge, UK

Robert Geisler - Karlsruhe Institute of Technology (KIT), Eggenstein-Leopoldshafen, Germany

Jean Philippe Mocho - The Royal Veterinary College, London, UK

Greg Paul - University of Exeter, Exeter, UK

Jan-Bas Prins - LUMC, Leiden, The Netherlands

Stefan Schulte-Merker - Hubrecht Institute, Utrecht, The Netherlands

Lynn Snedden - University of Chester, Chester, UK

Carole Wilson - UCL Zebrafish facility, London, UK

Secretarial Support

Laura De Francesco - Fondazione Guido Bernardini, secretary@fondazioneguidobernardini.org

Workshop Venue

Conference room - Hodgkin Building

King's College London, Guy's Campus, London SE1 1UL, UK

Arriving by underground

London Bridge (Northern and Jubilee Lines): 1 minute walk. Borough (Northern Line): 10 minute walk.

Elephant and Castle (Bakerloo Line): 25 minute walk. Bank/Monument (Northern Line): 20 minute walk.

Monument (District and Circle Lines): 15 minute walk.

Arriving by train

London Bridge (Northern and Jubilee Lines): 1 minute walk. Waterloo (Northern, Bakerloo, Jubilee,

Waterloo & City Lines): 30 minute walk.

Arriving by bus

Buses stopping at Tooley Street: 47. Buses stopping at London Bridge Station: 21 (24 hour), 43 (24 hour), 48, 149 (24 hour), 343 (24 hour), 381, N381, 521. Buses stopping at Borough High Street: 21 (24 hour), 35 (24 hour), 40, 47, 133 (24 hour).

Arriving by boat - commuter river service

From the east, Woolwich Arsenal - Savoy: get off at London Bridge City Pier.



I PLAN TO ATTEND THE WORKSHOP “ZEBRAFISH: AN ANIMAL MODEL IN BIOMEDICAL RESEARCH”

Last Name

First Name

Title/Position

Organization/Company

Mail address

City

State

Zip

Phone

Fax

Mobile

Mail @

Invoice Details

Organization/Company

VAT Registration Number

Mail address

City

State

Zip

Registration Fee

- 180.00 € included VAT (if not applicable VAT exempt declaration is needed).
Upon receipt of the Registration Form, FGB will issue an Order Acknowledgment.
Payment of the fee is due before workshop commencement.
No refunds will be given for cancellation received after invoice raising.

The Registration Fee Includes

Participation in the Scientific Programme.
Refreshment breaks as listed in the program.

Please fill in all the fields. Send copy of pre-registration to:

Fondazione Guido Bernardini | Via Caldera 21 20153 Milano Italy

Tel. : +39 02 45 07 67 87 • fax. : +39 02 45 07 02 12

secretary@fondazioneguidobernardini.org • www.fondazioneguidobernardini.org